

SANDERSON BROTHERS

TIMBER WINDOWS & DOORS



WINDOWS & DOORS

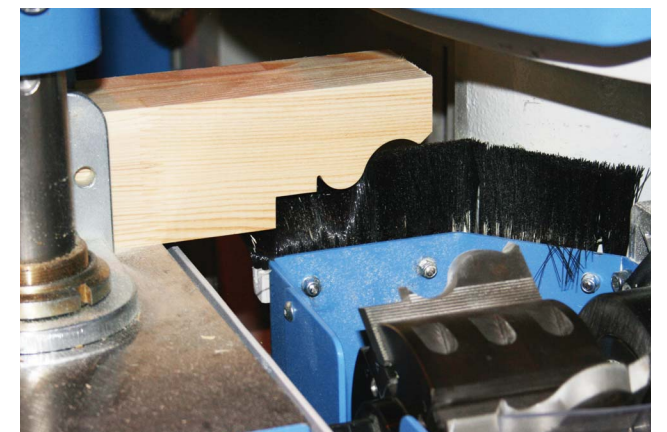
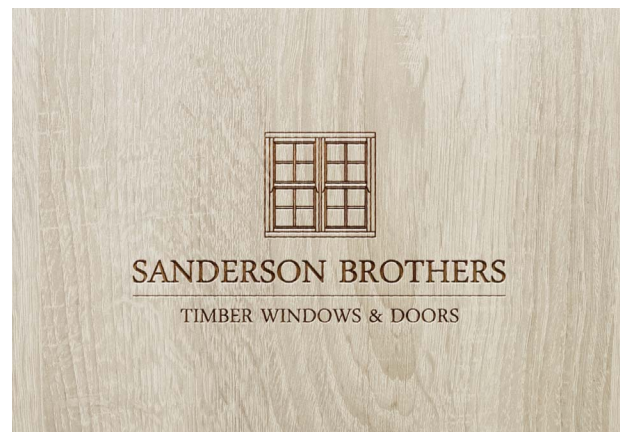
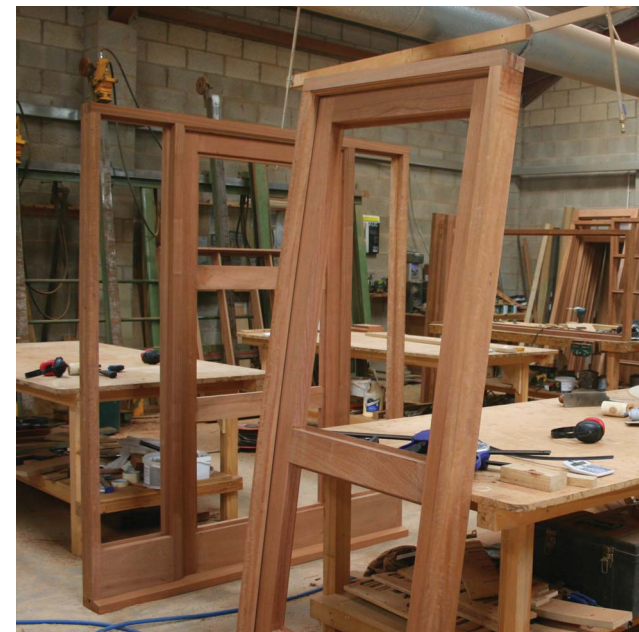


ABOUT US

Sanderson Brothers (Inglewhite) Ltd are located in the village of Inglewhite, on the edge of the Ribble Valley and have been manufacturing HIGH QUALITY joinery from this site since 1899.

Having identified a need for more energy efficient, secure windows but still keeping traditional detailed design we purchased a Soukup Wizard Windowline – one of the first into the UK. Followed by the installation of a spray booth to fully 'factory finish' all our products.

Further investment included testing our windows to achieve BRITISH FENESTRATION COUNCIL 'A' rating of windows across our range. Our casement window range is also PAS24 security tested to satisfy DOCUMENT 'Q' for new build houses. Our CMS Gold 3rd party certification ensures full compliance with CE marking regulations.





TIMBER WINDOWS

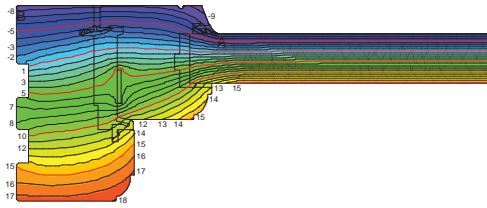
Our modern timber windows are designed and manufactured in ways to achieve years of service, without the need to re-finish. In comparison to their predecessors our products are superior in terms of security, operation and energy efficiency.

The timber window we produce today has a far greater life than comparable PVC-U products and although the initial cost is greater, the overall life cost is cheaper.

All our products can be manufactured in various timber types such as Laminated Sapele, Laminated Redwood, Utile, Accoya and European Oak.

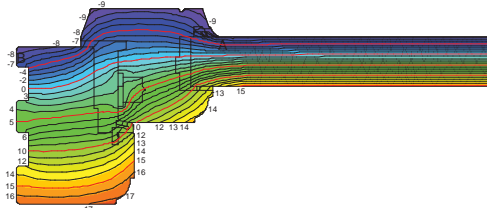


ENERGY RATING & ACCREDITATIONS



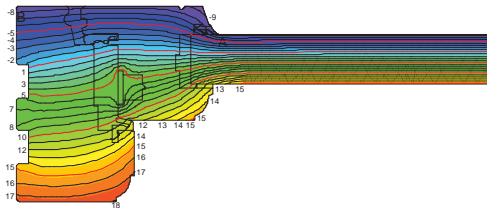
FLUSH CASEMENT

Uw = 1,5 W/m2K
Gw = 0,47 W/m2K (solar factor)
L factor = 0 W/m2K (effective air leakage)



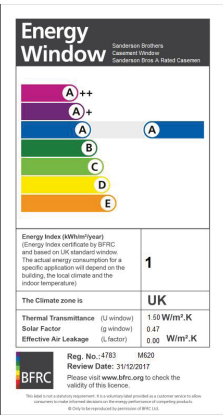
STORMPROOF CASEMENT

Uw = 1,5 W/m2K
Gw = 0,47 W/m2K
L factor = 0 W/m2K



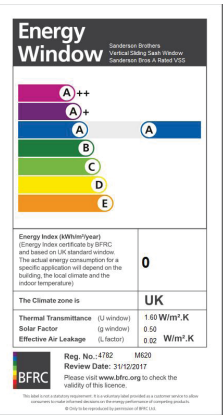
HIGH PERFORMANCE FLUSH CASEMENT

Uw = 1,5 W/m2K
Gw = 0,47 W/m2K
L factor = 0 W/m2K



SLIDING SASH

Uw = 1,6 W/m2K
Gw = 0,5 W/m2K
L factor = 0.02 W/m2K



PART Q

Building regulation Part Q came into effect on October 1st 2015, with compliance phased over 12 months, and affects any complete new build or through change of use such as a barn conversion. It should also be stressed products must demonstrate robustness by means of independent testing.



STORMPROOF CASEMENT WINDOWS

Our stormproof casement windows come in a wide choice of styles and designs, fitted with multipoint lock and draught seals (with horn detail if required).

The window achieves an 'A' rating and an overall 'U' value of 1.50 and have been tested to achieve PAS24.



The window achieves an 'A' rating and an overall 'U' value of 1.50 and has been tested to achieve PAS24





TRADITIONAL FLUSH

This window is an ideal choice for a period property and often incorporates glazing bars in many different layouts. It is fitted with multipoint locks, double draught seal and a choice of traditional or modern ironmongery.

The window achieves an 'A' rating and an overall 'U' value of 1.50 and has been tested to achieve PAS24

Option: friction hinges

Standard: butt hinges





HIGH PERFORMANCE CASEMENT

This window comes with double draught seals and also comes with an option of horn detail and is a more cost effective alternative to a sash window.

Without the horn detail it would also fit into a house with a more modern or contemporary style, it is fitted with a multipoint lock and a choice of traditional or modern ironmongery.



The window achieves an 'A' rating and an overall 'U' value of 1.50 and has been tested to achieve PAS24

MOCK SASH WINDOW





SLIDING SASH

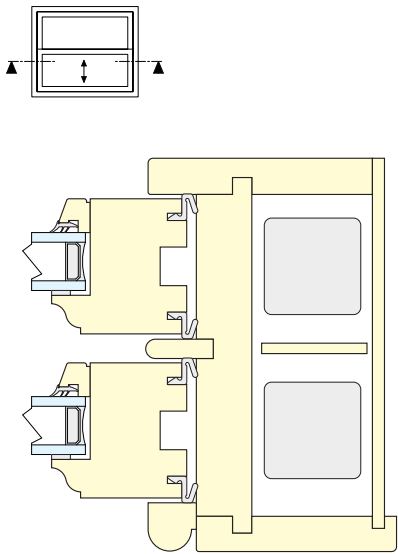
The sliding sash is a timeless classic. The old problems of draughty openers and sticking sashes have been eradicated with new design and modern draught seals, whilst still maintaining the original looks and character of the window.

The window can come with traditional cord and weight mechanism or more modern spiral balancers. There is also an option for sashes to 'tilt' inwards for easy cleaning.

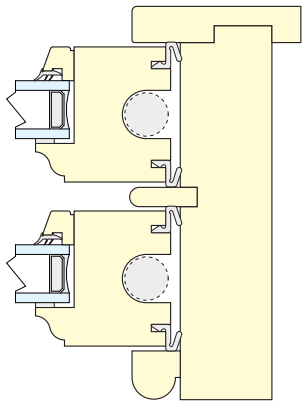


The window achieve an 'A' rating and an overall 'U' value of 1.6 and has been tested to achieve PAS 24.

Traditional cord with weights mechanism



Spiral balancer mechanism





TILT & TURN

This is a new addition to our portfolio and is the IV 78 - 92 design. The 92 mm thickness can satisfy 'low energy' buildings and passivehaus.

The window has multiple seals and can also come with the option of an 'Aluminium Clad' exterior profile in RAL colour of your choice.



IV 92 with triple glazing



IV 92 Aluminium Clad

- Alu profile Gutmann CONTOUR Integral
- Triple glazing $U_g = 0,5 \text{ W/m}^2\text{K}$
- Hidden hinges Sigenia
- Wood: spruce, pine, larch, oak, meranti





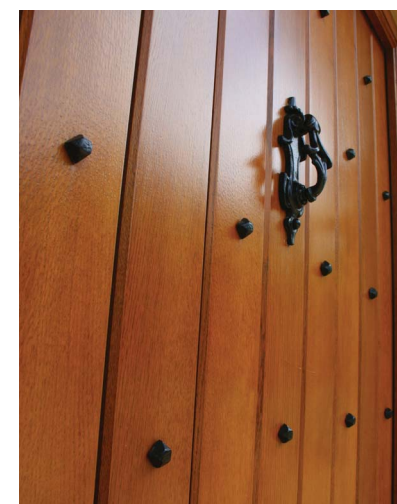
ENTRANCE DOORS, STABLE DOORS, FRENCH DOORS

Entrance doors can be manufactured in a 'multitude' of designs and styles either traditional or modern, we can work with clients to achieve the look they require.

Stable doors are a popular style for traditional kitchen and rear doors – with top of door being able to be opened whilst lower half can remain shut.

French doors come with 'open in' or 'open out' options and a 'multitude' of designs are also available.

All doors are 56mm thick with multipoint locks and high performance double glazing units.





BI-FOLDING DOORS

Bifold doors have become a popular choice over recent years, especially leading out onto patio areas.

Doors can open in or out, have multiple opening configurations (upto 16 panels wide) and can be matched to the styles of existing windows in a property.

Doors come with multipoint locks, secure hinges and concealed fittings as our other door ranges.





LIFT AND SLIDE

Lift and slide doors offer the largest areas of uninterrupted glass and maximum light into any property.

They are particularly popular in a modern style house and have a low threshold for a seamless transition from the internal to external of a property.



Multipoint locks, concealed interior locks on the meeting stiles and multiple draught seals give excellent security and weather performance. Low resistance rollers allow for a smooth operation of doors even on the largest of glazed panels.





PAINT COATINGS

(Vernites Industrial Coatings)

The coating we apply either paint or stain are all water based and are designed to give 'long life' durability with minimal maintenance.

The system is a one coat dipping primer with an additional three spray coats.

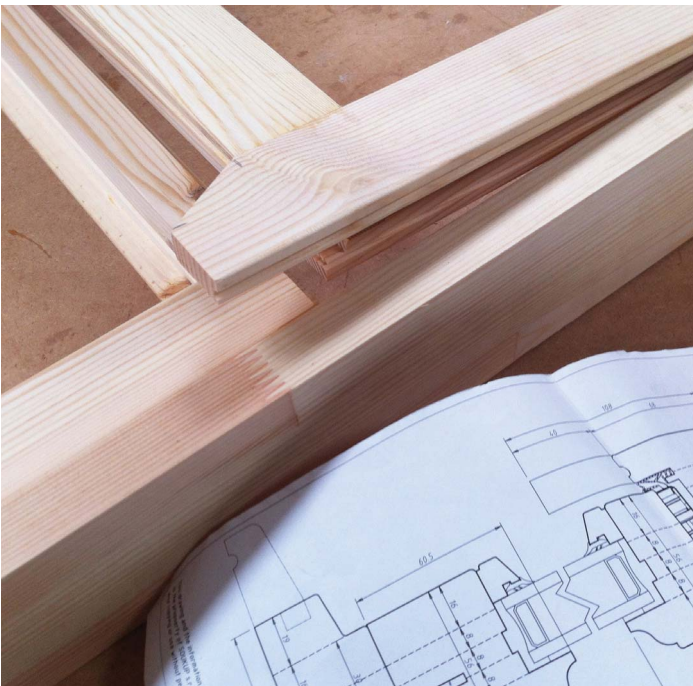
Almost any colour of paint or stain can be specified as well as a colour matching service.

Dual finishes can be provided to give a different look inside to out, and a reinvigorating balm can be supplied for application periodically after the product is fitted. A maintenance sheet is supplied with each order.



TIMBER

All our standard windows are manufactured out of Laminated Sapele if painted. If a stained window is required solid wood is used. Other timbers which are available include European Oak, Laminated Redwood and Accoya (which has earned the highest durability ratings of any timber). Utile is used for all doors and sashes.



DOUBLE GLAZING

Our double glazing gives excellent thermal efficiency and is one of the highest performing products available. Our suppliers (System 3) are approved to BS EN 1279 KM7491 and a 5 year guarantee is given on all double glazing units.

There is a wide choice of obscure glass patterns: leaded and coloured glass can be sourced.



IRONMONGERY

We can provide multipoint locks. Lift and slide door gear are supplied by MACO UK.

Wide choice of handles and fasteners from companies such as Carlisle Brass, Hoppe, Kirkpatrick, From the Anvil, Louis Frazer and more.

Spiral Balancers supplied by Balance UK. Sash window ironmongery from Croft.





SANDERSON BROTHERS

TIMBER WINDOWS & DOORS

Sanderson Brothers
Silk Mill Lane,
Inglewhite,
Preston,
Lancashire,
PR3 2LP
Tel: 01995 640 340 / 07780 915 120
Email: ian@sandersonbros.co.uk

www.sandersonbros.co.uk